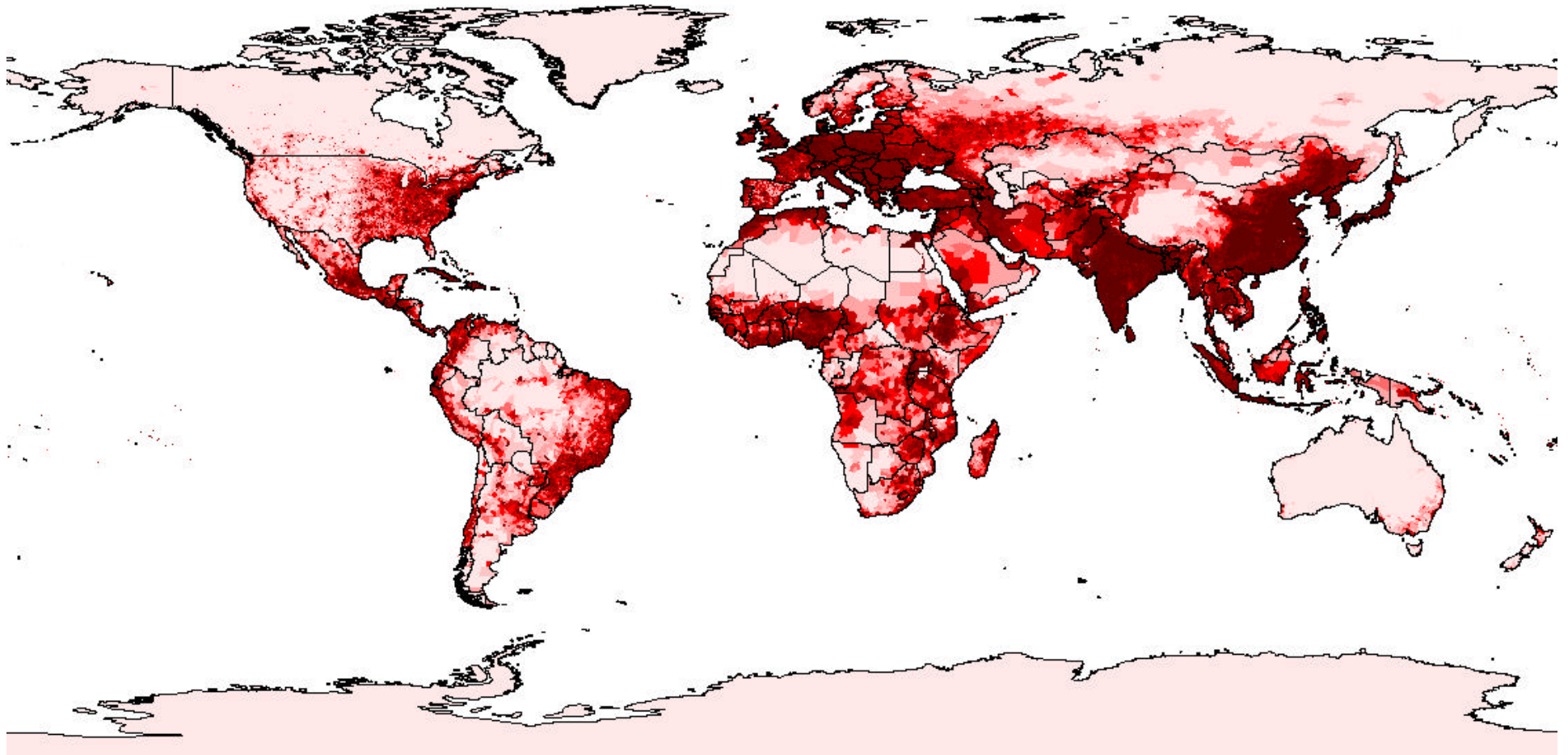


Global Population Density

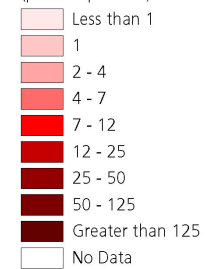


Map Projection: Geographic

Citation: WRI, 2000 based on CIESIN 2000

Notes:

Population density
(persons per km²)



Map Description:

This map indicates global population density for 1995. Population density is shown to be highest in India, eastern China, and central Europe. Alternatively, low population density are shown in central South America, North Africa, Australia, western China, and western U.S.

Analytical Overview:

The population data was generated from a global population database that includes population estimates for over 120,000 census units (CIESIN 1999). These estimates were standardized for 1995 (to be consistent with United Nations population estimates) and generated to a 5 km resolution. Population density surfaces were derived by dividing the population surface by area values (in km²).

Source:

1. Center for International Earth Science Information Network (CIESIN); Columbia University; International Food Policy and Research Institute; and World Resources Institute. 2000, Gridded Population of the World, Version 2. Palisades, NY: CIESIN, Columbia University. Available On-line at: <http://sedac.ciesin.org/plue/gpw>.